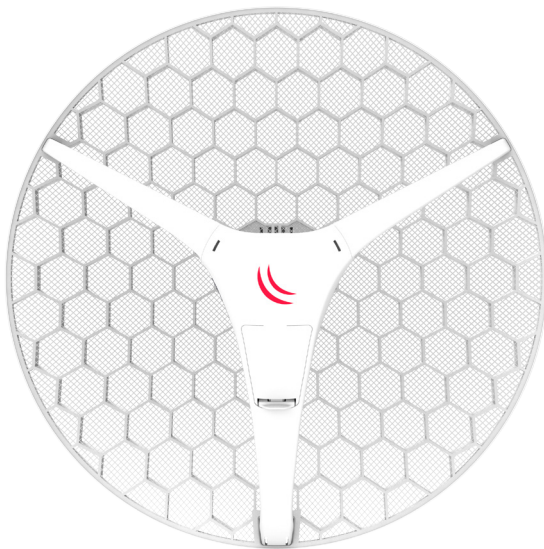


LHG series - now you can reach further!

We are adding two new models to our LHG product family, the LHG HP5 (high power) and LHG XL HP5 (extra large, high power). LHG HP5 comes with two times more output power than our regular LHG 5 - up to 630 mW, and is designed to reach up to 60% longer distances.



LHG XL HP5



LHG HP5

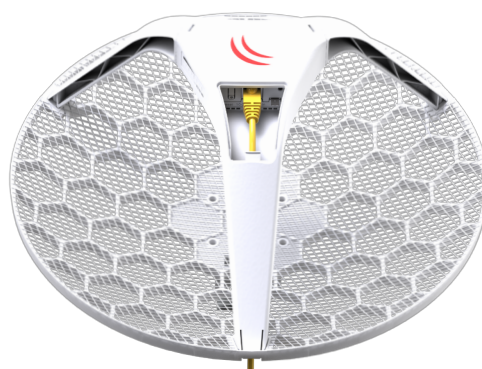


LHG 5

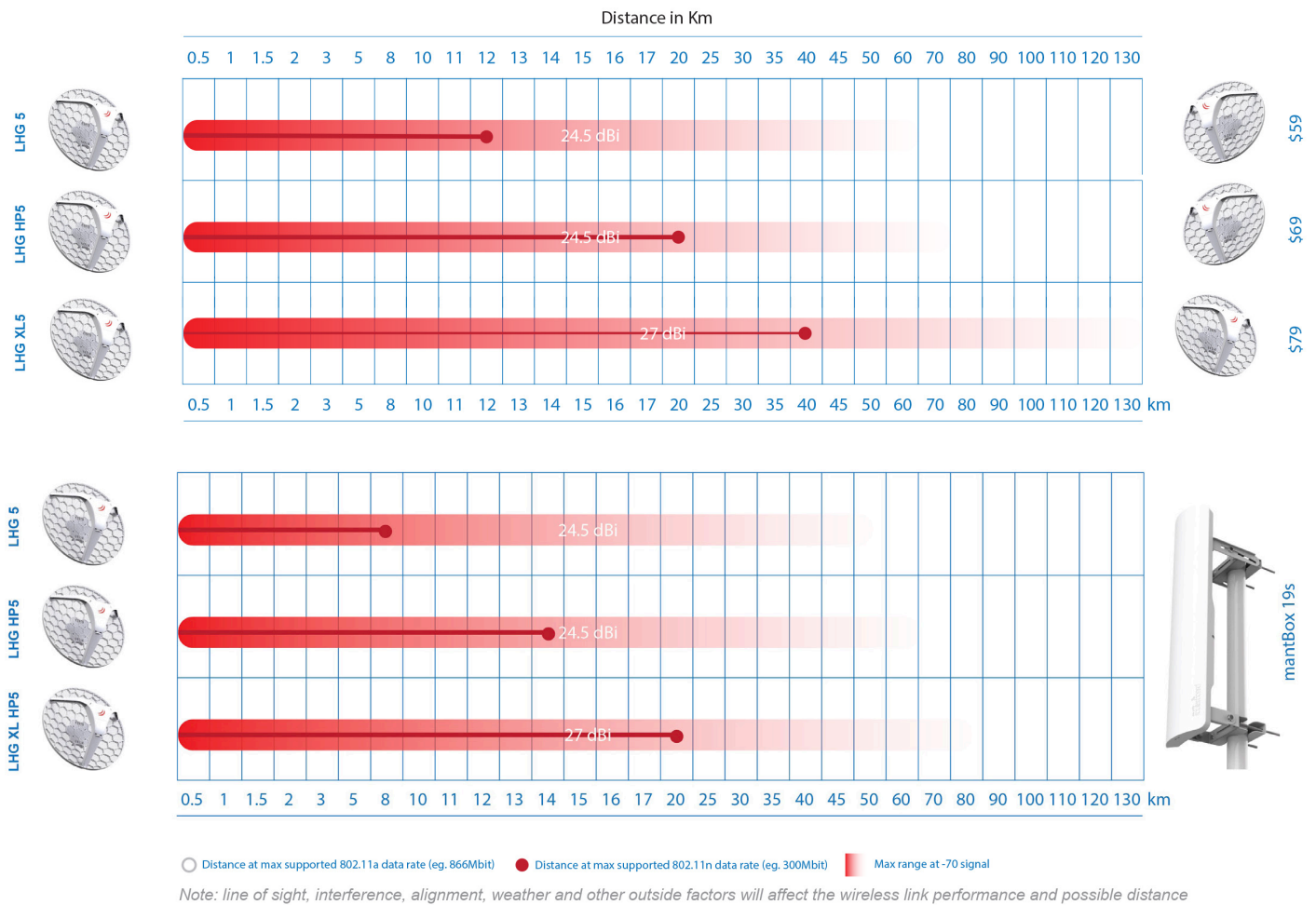
The LHG XL HP5 has a bigger 27dBi antenna with 630mW TX output power, designed to reach up to 40km in point-to-point setups at full speed, see the graphs for more information.

All units come with a PoE injector, power supply and pole mount, ready to be deployed.

Model	Antenna gain	TX power	Price
LHG 5	24.5 dBi	up to 316 mW	\$59
LHG HP5	24.5 dBi	up to 630 mW	\$69
LHG XL HP5	27 dBi	up to 630 mW	\$79



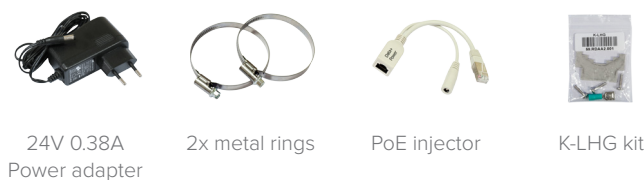
Comparison



Wireless specifications

Model	LHG 5		LHG HP5		LHG XL HP5	
RATE	Tx (dBm)	Rx (dBm)	Tx (dBm)	Rx (dBm)	Tx (dBm)	Rx (dBm)
6MBit/s	25	-96	28	-96	28	-96
54MBit/s	20	-80	25	-80	25	-80
MCS0	25	-96	28	-96	28	-96
MCS7	19	-75	24	-75	24	-75

Included



24V 0.38A Power adapter

2x metal rings

PoE injector

K-LHG kit

Specifications

Product code	RBLHG-5nD (International) RBLHG-5nD-US (USA)	RBLHG-5HPnD (International) RBLHG-5HPnD-US (USA)	RBLHG-5HPnD-XL (International) RBLHG-5HPnD-XL-US (USA)
CPU nominal frequency	600 MHz		
Size of RAM	64 MB		
Storage	16 MB Flash		
10/100 Ethernet ports	1		
Wireless	Built-in 5 GHz 802.11a/n, dual-chain		
Wireless chip model	AR9344		
Operating frequency	International: 5150 - 5875 MHz USA: 5170 - 5250 MHz; 5725 - 5835 MHz		
Antenna gain	24.5 +/- 0.5 dBi	24.5 +/- 0.5 dBi	27 +/- 0.5 dBi
Antenna beam width	7°	10,4°	6,4°
Cross polar	15 dBi	15 dBi	21 dBi
Port to port isolation	20 dB	18 dB	18 dB
Front to back ratio	25 dB	25 dB	35 dB
Return loss	10 dB	12 dB	14 dB
VSWR	1.925:1	1.6:1	1.5:1
PoE in	Yes		
Supported input voltage	11 V - 30 V (passive PoE)	10 V - 28 V (passive PoE)	
Wind loading	186N @ 205 km/h		
Operating temperature	-40 to 70° C		
Operating humidity	5 to 95% noncondensing		
Shock and vibration	ETSI300-019-1.4		
ETSI specification	EN 302 326 DN2		
Dimensions	Ø 391 x 222 mm; package 450 x 450 x 145 mm		Ø 550 x 245 mm; package 585 x 595 x 138 mm
Weight	Unit: 560 g; package: 1.98 kg		Unit: 945 g; package: 2.99 kg
Max Power consumption	6 W	7 W	7 W