

# quickMOUNT pro

The quickMOUNT pro is a advanced wall or pole mount adapter for small point to point and sector antennas.

The quickMOUNT pro gives possibility to turn antenna within 140° both in horizontal and vertical plane. With the quickMOUNT pro it is possible to perfectly set antenna alignment using integrated graduated scale.

- It's simple and low cost
- Adjustable horizontally and vertically
- Wall or pole mountable
- Two models available, one for SXT, OmniTIK, BaseBox or any other pole mountable device via the included adapter. A special model is also available for LHG

The quickMOUNT is very durable due to it's special plastic composite material - anvilNITE (TM).



QMP

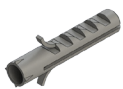


QMP-LHG

## Specifications

|  |  |
|--|--|
| Product code                                     | QMP / QMP-LHG  |
| Dimensions                                       | 95x88x112mm  |
| Tube diameter                                    | 35 mm  |
| Max tube diameter to which mount can be attached | 65 mm  |
| Maximum antenna weight                           | 1.5 kg   |
| Maximum wind load                                | 100 N  |
| Turn angle for MikroTik products                 | 140°   |
| Compatible devices                               | QMP: SXT, OmniTIK, other antennas that are designed to be pole mounted<br>QMP-LHG: LHG 5 |
| Material   | anvilNITE™   |

## Includes



4X 6x30mm wall anchor



4X Self tapping screw



4X M6x20 button head screw (only QM-LHG)



4X M6 locking nut (only QM-LHG)



50-70mm hose clamp