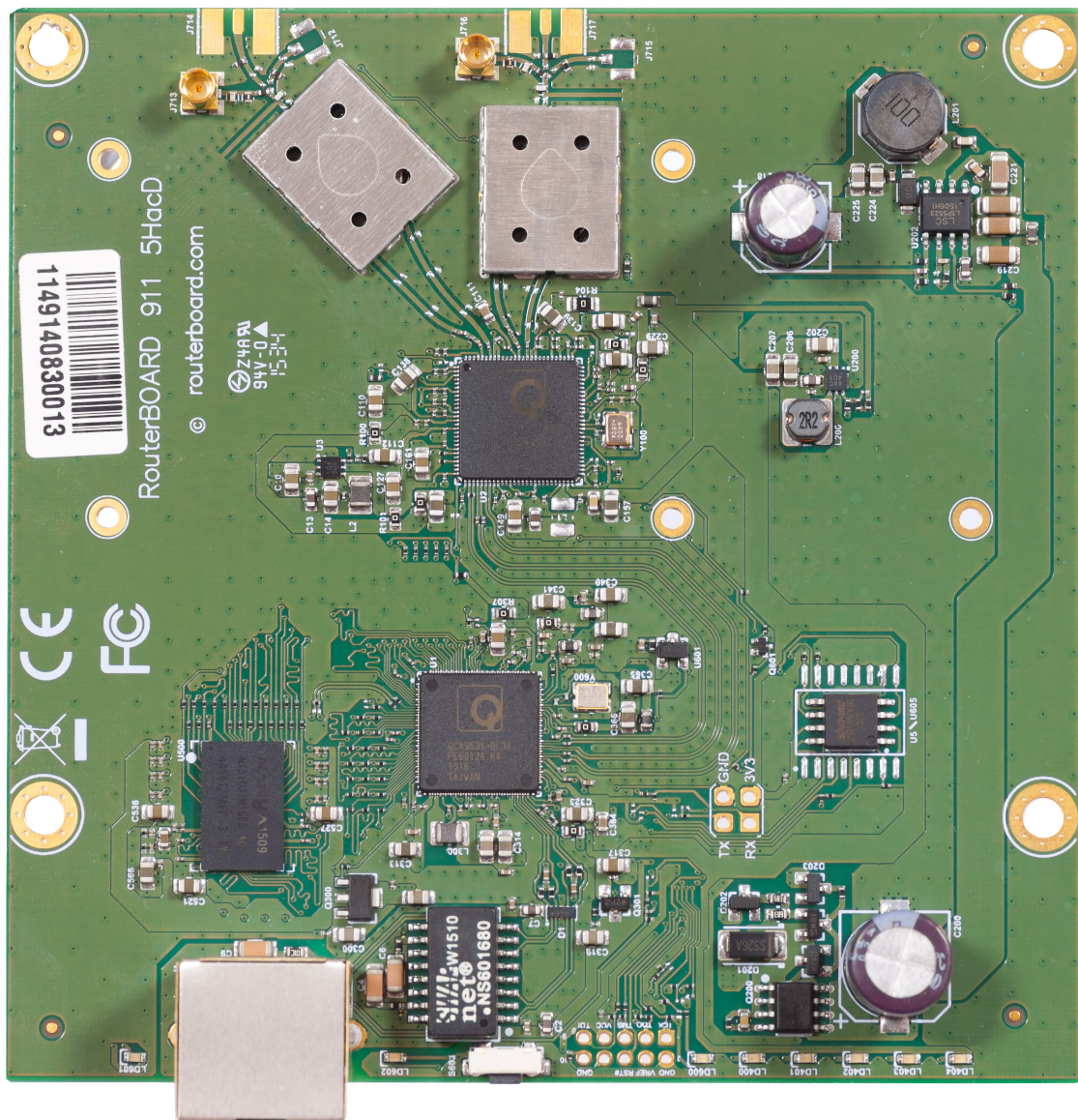


# 911 Lite5 ac

The 911 Lite5 ac is upgrade for our low-cost 911 Lite5 dual model.

It's a small CPE type RouterBOARD wireless router with an integrated 5Ghz dual-chain wireless card, now with added 802.11ac support. It's equipped with powerful 650MHz CPU and 64MB, great for building custom 5Ghz CPE or Backhaul units. Unit is equipped with 10/100Mbps Ethernet port.



## Specifications

Product code	RB911-5HacD (International) RB911-5HacD-US (USA)			
CPU	QCA9531			
CPU nominal frequency	650 MHz			
CPU core count	1			
Size of RAM	64 MB			
10/100 Ethernet ports	1			
Wireless	Built-in 5 GHz 802.11ac, dual-chain			
Wireless chip model	QCA9882			
Operating frequency	International	5150 - 5875 MHz	International	2412 - 2484 MHz
	USA	5170 - 5250 MHz 5725 - 5835 MHz	USA	2412 - 2462 MHz
PoE in	Yes			
Supported input voltage	10 V - 30 V (Jack or Passive PoE)			
LEDs	8 (6 user leds)			
Dimensions	113 x 89 mm			
License level	3			
Operating System	RouterOS			
Max Power consumption	7 W			

## Wireless specifications

RATE	Tx (dBm)	Rx (dBm)
6MBit/s	29	-95
54MBit/s	26	-81
MCS0	29	-95
MCS7	25	-77
MCS9	22	-72