



# N600 Wireless Dual Band Gigabit Ceiling Mount Access Point

EAP220

## ■ Highlights

- Simultaneous 2.4GHz 300Mbps and 5GHz 300Mbps connections for 600Mbps of total available bandwidth
- The EAP Controller Software enables administrators to manage hundreds of EAPs easily from any PC on the network.
- Supports PoE (802.3af) for convenient installation
- Ceiling mounting design with chassis make it easy to deploy on a wall or ceiling
- Captive portal provides one convenient method of authentication for Wi-Fi guests
- Multi-SSID divides multiple wireless networks for different users
- Enterprise class Wi-Fi security help to decrease network security threats.
- Gigabit ethernet port enables bandwidth-intensive application or multimedia transferring

## Standards

- IEEE 802.11a/b/g/n
- IEEE 802.3af

## Functionality

- Multi-SSID
- Load Balance
- Wireless Schedule
- QoS (WMM)
- Automatic Channel Assignment
- Transmission Power Adjustment

## Security

- Captive Portal Authentication
- Wireless MAC Address Filtering
- Isolation between Clients
- SSID to VLAN Mapping
- Rogue AP Detection
- 802.1X Support
- WEP, WPA/WPA2-PSK, WPA/WPA2-Enterprise Encryption

## Hardware

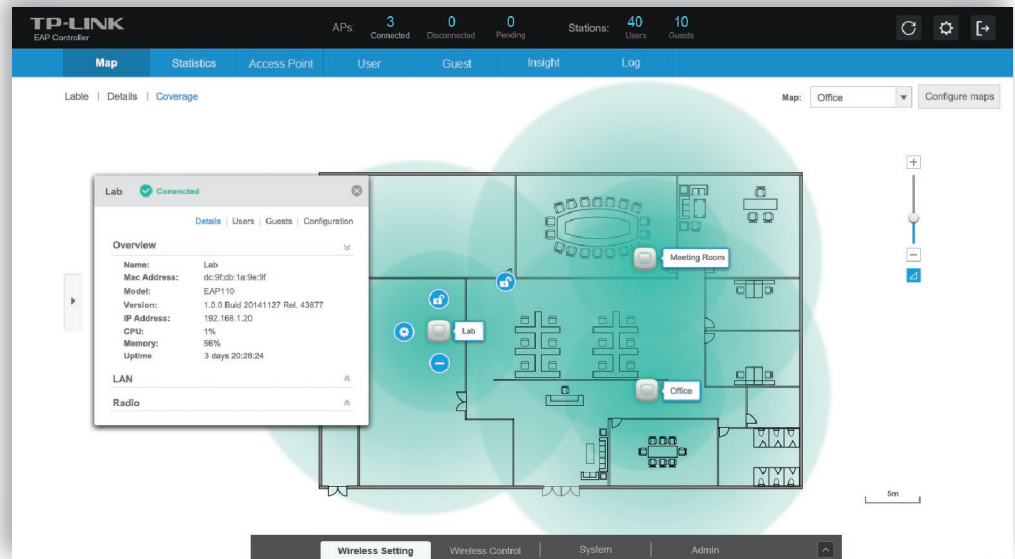
- 1 Gigabit Ethernet Port
- 1 Console Port
- 4\*4dBi Internal Antennas
- Dimensions: 7.1\*7.1\*1.9 in. (180\*180\*47.5mm)



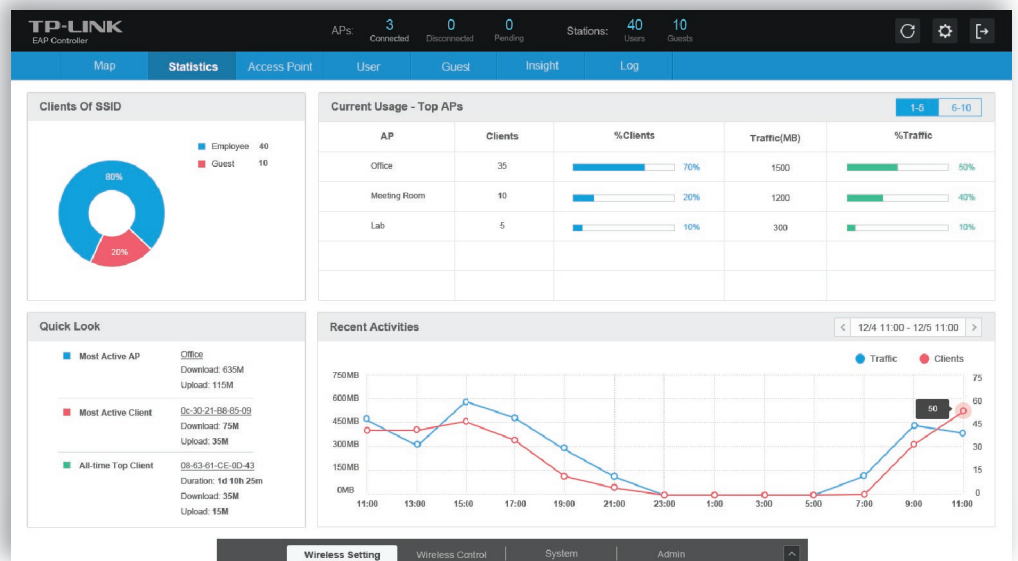
Details: <http://www.tplink.com/en/Support/>  
German/Austrian/Swiss users are not included

## EAP Controller Software – simple and scalable business Wi-Fi management

The EAP Controller Software enables administrators to manage hundreds of EAPs easily from any PC on the network. Includes such administrative features as centralized configuration, real-time monitoring, and graphical analysis of network traffic.



- Free controller software, no expensive hardware controller required
- Easy-to-use, no special training necessary
- Upload floor plans for a more intuitive Wi-Fi management
- Advanced security features including Captive Portal, Rogue AP Detection



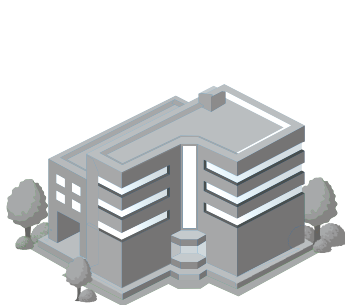
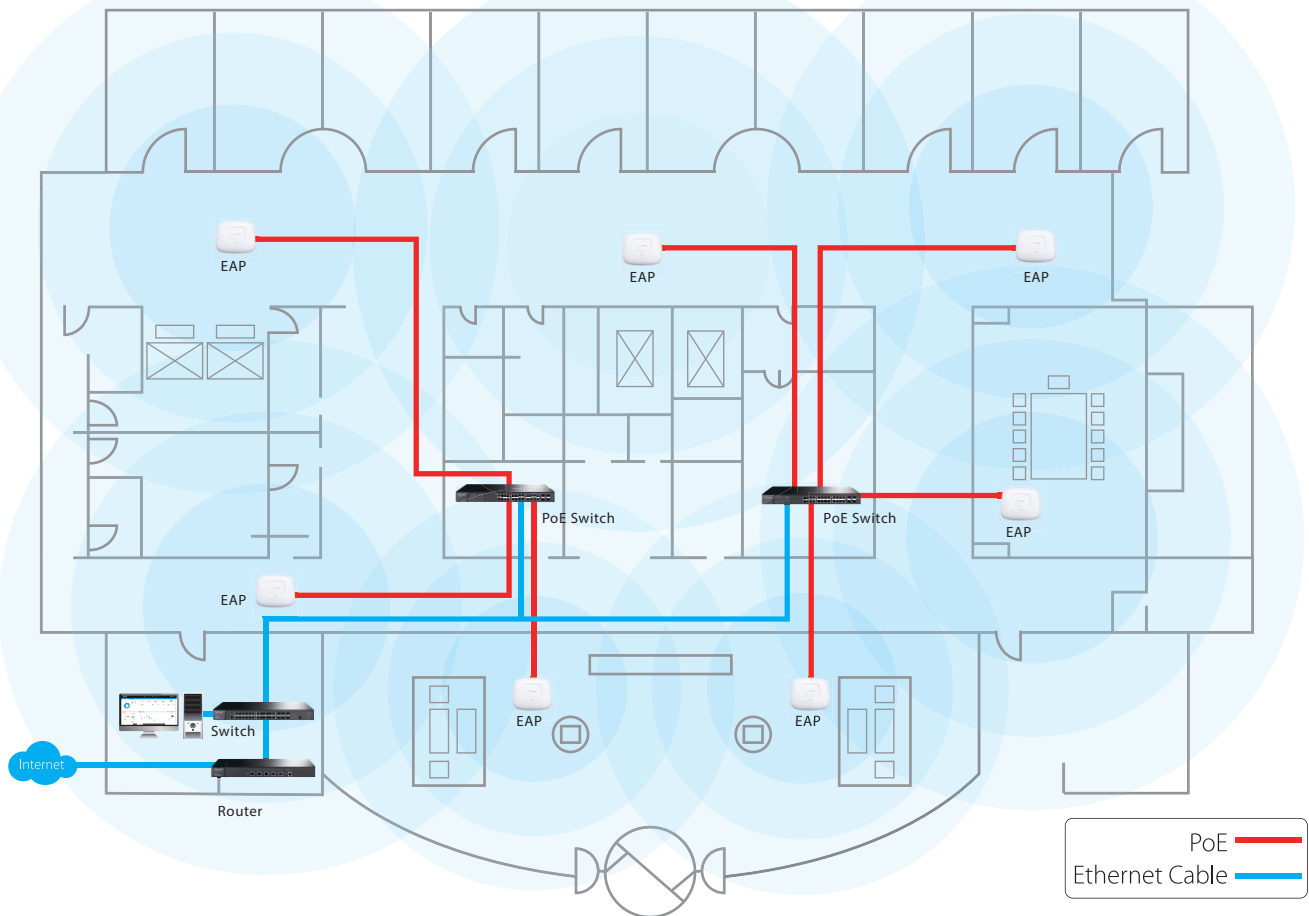
## Real-time monitoring of your wireless network

- Directly view traffic on any individual AP on the network
- Graphical activity of clients connected to the network
- Visual analytics of overall network usage and traffic distribution

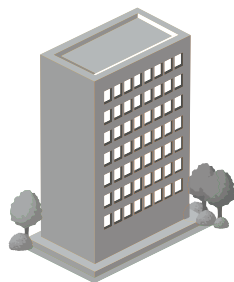
## Typical Applications

EAP220 is specially designed for the high-density, intensive demanding businesses environment, include campus, hotels, malls and offices.

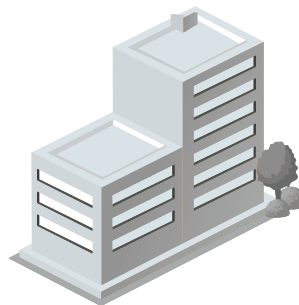
### WLAN Solution for Hotel as an Example



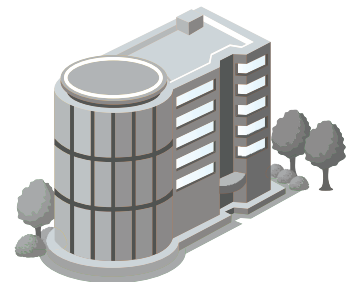
CAMPUS



OFFICE



HOTEL



MALL

## Specifications

MODEL	EAP120	EAP220
Name	300Mbps Wireless N Gigabit Access Point	N600 Wireless Dual Band Gigabit Access Point
<b>MAIN DESIGN</b>		
LAN Interface	Gigabit Ethernet (RJ-45) Port *1	
Wireless Frequency	2.4GHz	2.4GHz & 5GHz
Wi-Fi Standards	IEEE 802.11b/g/n	IEEE 802.11a/b/g/n
Maximum Data Rate	Up to 300 Mbps	Up to 300+300 Mbps
Internal Antennas	2* 4dBi	4* 4dBi
Max Rf Transmit Power <sup>1</sup>	FCC: <26dBm; CE: <20dBm	FCC: <26dBm(2.4GHz), <20dBm(5GHz); CE: <20dBm
Power over Ethernet (PoE)	IEEE 802.3af	IEEE 802.3af
<b>CENTRALIZED MANAGEMENT</b>		
Cluster	●	-
Max APs in One Cluster	24	-
EAP Controller Software		●
<b>SECURITY</b>		
Captive Portal Authentication		●
Wireless MAC Address Filtering		●
Wireless Isolation between Clients		●
SSID to VLAN Mapping		●
Rogue AP Detection		●
WEP Encryption		64/128/152-bit
WPA/WPA2-Personal Encryption		●
WPA/WPA2-Enterprise Encryption		●
802.1X Support		●
<b>WIRELESS FUNCTION</b>		
Multiple SSIDs	8	16 (8 on each radio)
Enable/Disable Wireless Radio		●
Automatic Channel Assignment		●
Transmit Power Control		Adjust Transmit Power on dBm
QoS(WMM)		●
Load Balance		●
Wireless Schedule		●
Wireless Statistics		Based on SSID/AP/Client
<b>SUPPORTED DATA RATES</b>		
802.11n	6.5 Mbps to 300 Mbps (MCS0 - MCS15, HT 20/40)	
802.11g	6, 9, 12, 18, 24, 36, 48, 54 Mbps	
802.11b	1, 2, 5.5, 11 Mbps	
802.11a	6, 9, 12, 18, 24, 36, 48, 54 Mbps	

<sup>1</sup> Maximum transmit power is limited by local regulatory settings

<b>MANAGEMENT</b>		
LED ON/OFF Control		●
Management MAC Access Control		●
Web-based Management		HTTP/HTTPS
Telnet		●
CLI (Command Line Interface)		●
SNMP		v1,v2c
System Logging		Local/Remote Syslog
Email Alerts		●
<b>PHYSICAL &amp; ENVIRONMENT</b>		
Power Supply	PoE or External 12VDC / 1A Power Supply	PoE or External 12VDC / 1.5A Power Supply
Maximum Power Consumption	4.4 watts	9.6 watts
Console Port		RJ45*1
Physical Security Lock		Kensington Lock Slot
Button		Reset Button, Power On/Off Button
Watch Dog		●
Dimensions (W * D * H)		7.1 x 7.1 x 1.9 in. (180*180*47.5mm)
Mounting		Ceiling /Wall mounting (Kits included)
<b>OTHERS</b>		
Certification		CE, FCC, RoHS
Package Contents	300Mbps Wireless N Gigabit Ceiling Mount Access Point EAP120 Power Adapter Mounting Kits Resource CD Installation Guide	N600 Wireless Dual Band Gigabit Ceiling Mount Access Point EAP220 Power Adapter Mounting Kits Resource CD Installation Guide
System Requirements		Microsoft Windows XP, Vista, Windows 7, Windows 8
Environment		Operating Temperature: 0°C~40°C (32°F~104°F); Storage Temperature: -40°C~70°C (-40°F~158°F); Operating Humidity: 10%~90% non-condensing; Storage Humidity: 5%~90% non-condensing;